

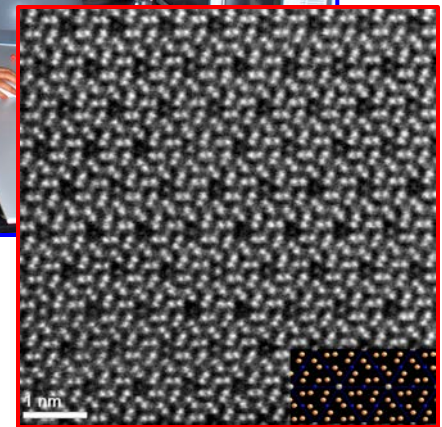
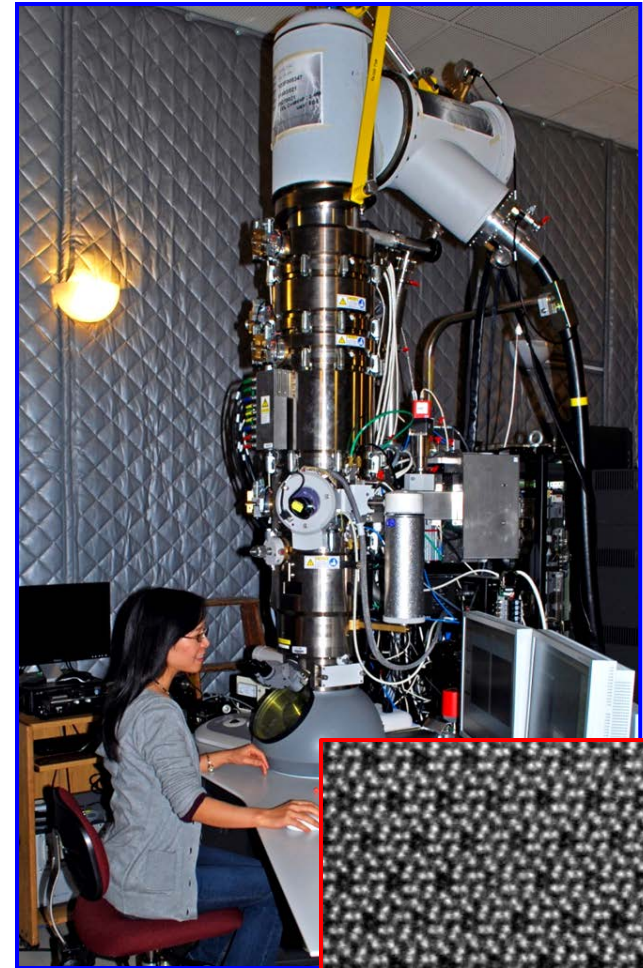
FEI Titan S Aberration-corrected TEM-STEM

Techniques/Capabilities:

- extreme Schottky-field emission gun (X-FEG)
- CEOS dodecapole probe (STEM) aberration corrector
- GIF Quantum with dual EELS and fast spectrum imaging capabilities
- Operating voltages: 60kV, 120kV, and 300kV
- HAADF/ADF/BF STEM detectors
- advanced version 2k X 2k UltraScan CCD
- CompuStage SuperTwin lens ($\pm 30^\circ$ tilt)

Current available dedicated holders:

- FEI single/double tilting holders
- Vacuum transfer holder
- Nanofactory AFM/STM holders
- LN₂ cooling holder
- Protochip Aduro heating holder



Contact: Miaofang Chi, chim@ornl.gov, (865) 241-4284