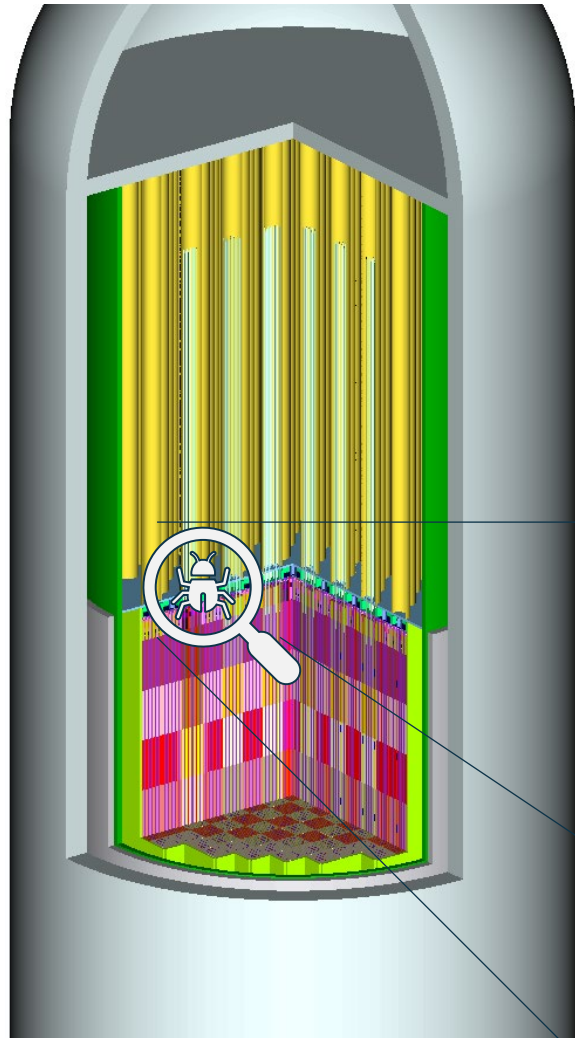


# Cold vs. hot dimensions for... the activation of thimble plugs!



**Dimensions**

- Differential thermal expansion & swelling
- Mat. density change

**Flexible geometry model**

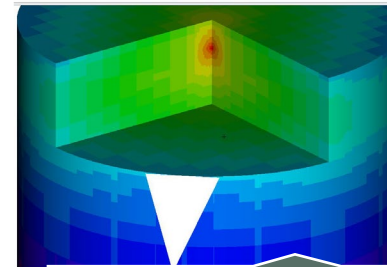
- Up to pin level
- Assembly + TP / CR
- Core / Reactor

**MAVRIC**

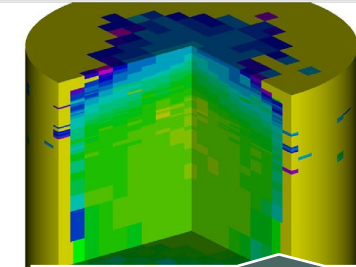
- Flux calculation in assembly-related components

**ORIGEN**

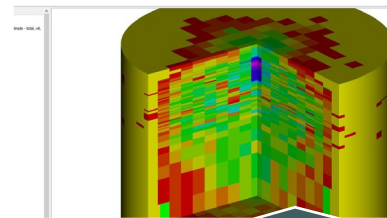
- Depletion



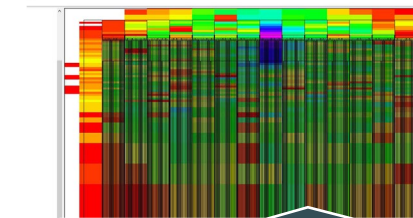
Importance map



Flux



Rel. uncertainty



Rel. uncertainty