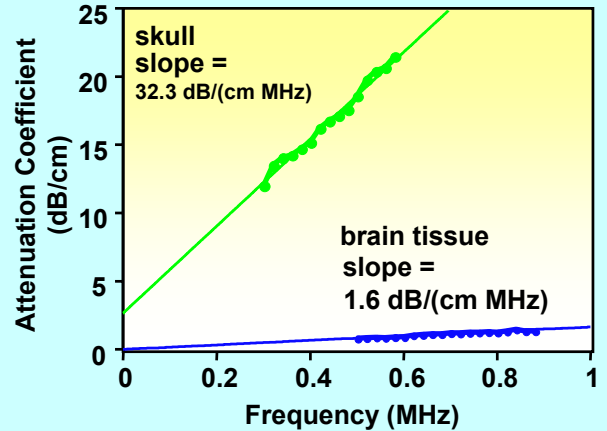
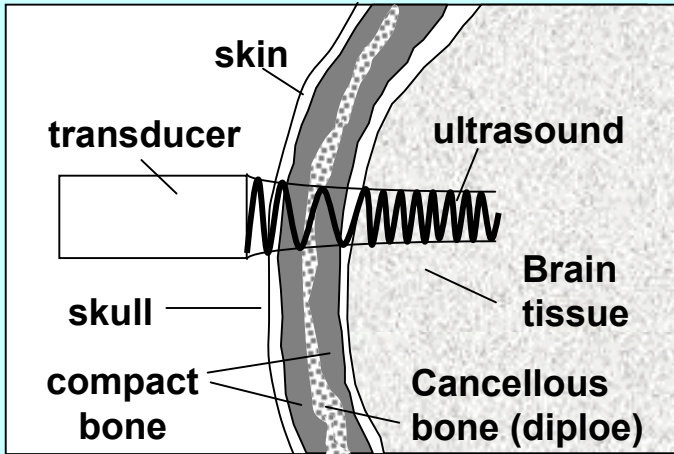


Ultrasonic Method for the Detection of Brain Injury

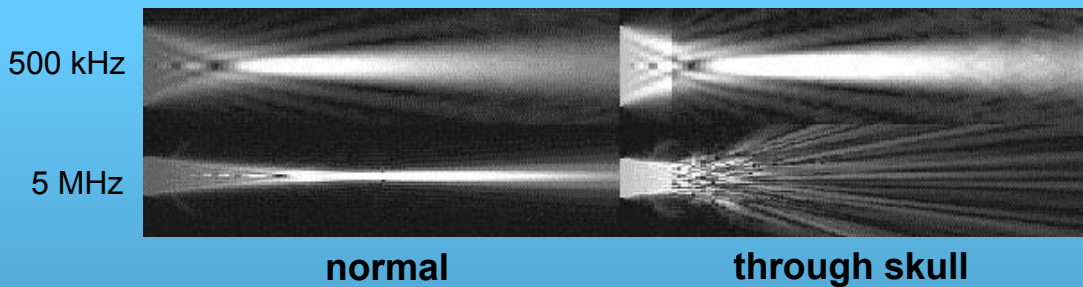
Tuan Vo-Dinh and Joel Mobley

Oak Ridge National Laboratory, Oak Ridge, TN 37831-6101

- Attenuation across the skull limits the use of ultrasound
- Lower frequencies can better penetrate the skull



Effects of Transcranial Propagation on Ultrasonic Fields:
lower frequencies are less susceptible to aberrations



Researchers demonstrating the data collection process using the prototype ultrasonic brain injury detector